



Automatikwerk
Self-winding movement
J880.5

JUNGHANS - DIE DEUTSCHE UHR

Junghans. Live your style.**Congratulations on becoming the owner of an original Junghans!**

Junghans watches are and always have been something special. They have made watchmaking and design history. And we are still doing so today. For the story of success that began in 1861 in Schramberg in the Black Forest continues with each new model. Present in every watch are the elements that make Junghans special: style, passion, innovative spirit and precision right down to the tiniest detail. Put another way: when traditional craftsmanship, leading edge watch technology and classy design come together, then it is a genuine Junghans. A watch for all those who live their own style – and on that we can not do other than congratulate you!

Your

Uhrenfabrik Junghans GmbH & Co. KG

Contents

Instructions for use
General information

Page
17
23

Instructions for use Calibre J880.5

Important note:

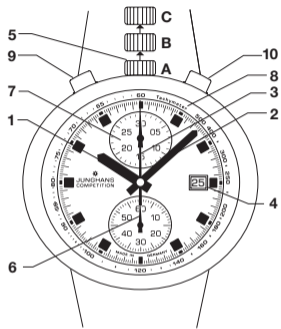
Do not make any changes to the date between 08:00 p.m. and 02:00 a.m., as the date is automatically advanced by the movement during this period and you could damage the date advance mechanism.

Winding up the watch

The screwed crown featured on your watch is only functional after loosening by turning to the left. With the crown in position A, you can wind up the automatic movement manually. At least 2 to 3 rotations of the crown are needed to start the movement. It is better to wind it up completely. It is fully wound up after approx. 40 rotations of the crown, as then the maximum accuracy and its power reserve (even after the watch is put down) will last for the maximum period. After you have set your watch, you should wear it, so that the automatic winding system (via rotor movement) keeps it constantly operational.

Features and functions

Calibre J880.5



- 1 Hour hand
- 2 Minute hand
- 3 Stopwatch second hand
- 4 Date display
- 5 Crown
- 6 Second hand
- 7 Minute counter
- 8 Tachymeter scale
- 9 Start-stop button
- 10 Reset button

Setting the time

Pull the crown into position C. This stops the movement. You can now set the required time. To achieve a time display that is as accurate as possible, we recommend subsequently positioning the minute hand in a backwards movement. This serves to minimise the degree of tolerance in the trains. Example: you wish to set the time as 10.10. Rotate the minute hand clockwise until 10.20 is displayed, then set the time of 10.10 in anticlockwise direction.

Then move the crown back to position A.

Note: to set the time precisely we recommend stopping the movement when the second hand is over the 60.

Setting the date

Pull the winder into position B. You can now set the date by turning it to the right. **Do not make any changes to the date between 8pm and 2am, as the date is automatically advanced by the movement during this period and you could damage the date advance mechanism.** If the month has less than 31 days, set the date manually to the first day of the following month.

Using the chronoscope

Starting time measurement:

You start the chronoscope by pressing the start-stop button (9).

Stopping time measurement:

You stop the chronoscope by pressing the start-stop button (9) again.

Reset:

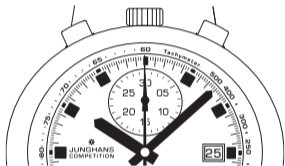
Press the reset button (10). This returns all three of the stopwatch hands to their starting position.

Adding measured times:

After measuring the first time, you can add times together by pressing the start-stop button again instead of the reset button. The chronoscope hands will then continue running from the stopped position.

Tachymeter scale

The tachymeter scale indicates the average speed travelled over a defined distance. The scale is based on a distance of one kilometre. At the beginning of the distance start the timing procedure by pressing the start-stop pusher (9). After one kilometre stop the timing procedure by pressing the start-stop pusher again (9). The second hand displays the average speed travelled on the scale.



Technical information

Automatic movement with chronoscope function

Calibre J880.5

Automatic winding mechanism

25 jewels

28,800 semi-vibrations per hour

min. 48 hour power reserve






Anti-magnetic to DIN 8309

Shockproof: Nivachoc

Spring: Nivatronic

Balance: Gold-plated nickel

Water resistance

Marking	Instructions for use				
	 Washing, rain, splashes	 Shower	 Bath	 Swimming	 Diving without scuba tanks (snorkelling)
No mark	No	No	No	No	No
3 BAR	Yes	No	No	No	No
5 BAR	Yes	No	Yes	No	No
10 BAR	Yes	Yes	Yes	Yes	No
20 BAR	Yes	Yes	Yes	Yes	Yes
30 BAR	Yes	Yes	Yes	Yes	Yes
50 BAR	Yes	Yes	Yes	Yes	Yes

The water resistance as prescribed by DIN is a design engineering characteristic which is susceptible to external influences such as shock, fluctuations in temperature, UV light and direct contact with cosmetics and cleaning products (greases and acids). The “3–50 BAR” condition is thus only applicable for brand new watches. We recommend having the watch inspected at regular intervals.

General information

External influences can affect the watch’s waterproof qualities, which may let in moisture. We therefore recommend that you have your watch regularly inspected by your Junghans specialist. Other servicing tasks or wrist strap repairs should also be done by your Junghans specialist. Your watch is fitted with a quality wrist strap that has undergone multiple inspections in our factory. If, however, you decide to change the strap, please fit a new one of the same quality, preferably an original Junghans wrist strap. Watch and wrist strap can be cleaned with a dry or slightly moistened cloth. NB: Do not use chemical cleaners (e.g. benzine or paint thinners). These may harm the surface.

Live your style.



Uhrenfabrik Junghans GmbH & Co. KG
Geißhaldenstr. 49 · D-78713 Schramberg
www.junghans.de · info@junghans.de